

OCEAN FREIGHT PORT SITUATION UPDATE

JUNE 2025

This document is designed to provide you with region-specific updates. Simply select your regional cluster from the menu to gain insights into the current state its individual ports.

Our goal is to equip you with essential information, fostering informed decision-making and effective logistics planning. Stay ahead, stay informed.

DHL Global Forwarding – Excellence. Simply Delivered.



AMERICAS

[US & Canada WC](#)

[US & Canada EC](#)

[US Gulf](#)

[Mexico](#)

[CENAC](#)

[LATAM](#)

EUROPE

[North Continent](#)

[United Kingdom](#)

[Mediterranean](#)

MIDDLE EAST & AFRICA

[East Mediterranean](#)

[Atlantic](#)

[Gulf & Indian Ocean](#)

ASIA-PACIFIC

[China](#)

[North-East Asia](#)

[South-East Asia](#)

[Oceania](#)

OCEAN FREIGHT PORT SITUATION UPDATE

AMERICAS



Halifax - Fairview Cove dwell time 1.9 days and Atlantic Hub 1.80 days

Saint John (CASJB) - DPW - 1 of 6 gantry cranes remains inoperable due to required repairs. The crane is expected to return to service in 7 days. Terminal utilization has stabilized at a moderate level of 56%. Import rail dwells are presently at 3.7 days

Montreal - Yard utilization is at 48%, with vessel productivity remaining high. However, the MCA and AT2 services continue to operate off schedule due to ongoing delays overseas.
Current import rail dwell time is 3.5 days, supported by a steady and reliable supply of railcars, which is expected to continue.

AMERICAS

US & CANADA WC



PRINCE RUPERT

- 5+ days delay
- Medium shortages
- Minor road issues
- No other issue

VANCOUVER

- 2-5 days delay
- Minor shortages
- Minor road issues
- Terminal berth length delay

SEA TAC

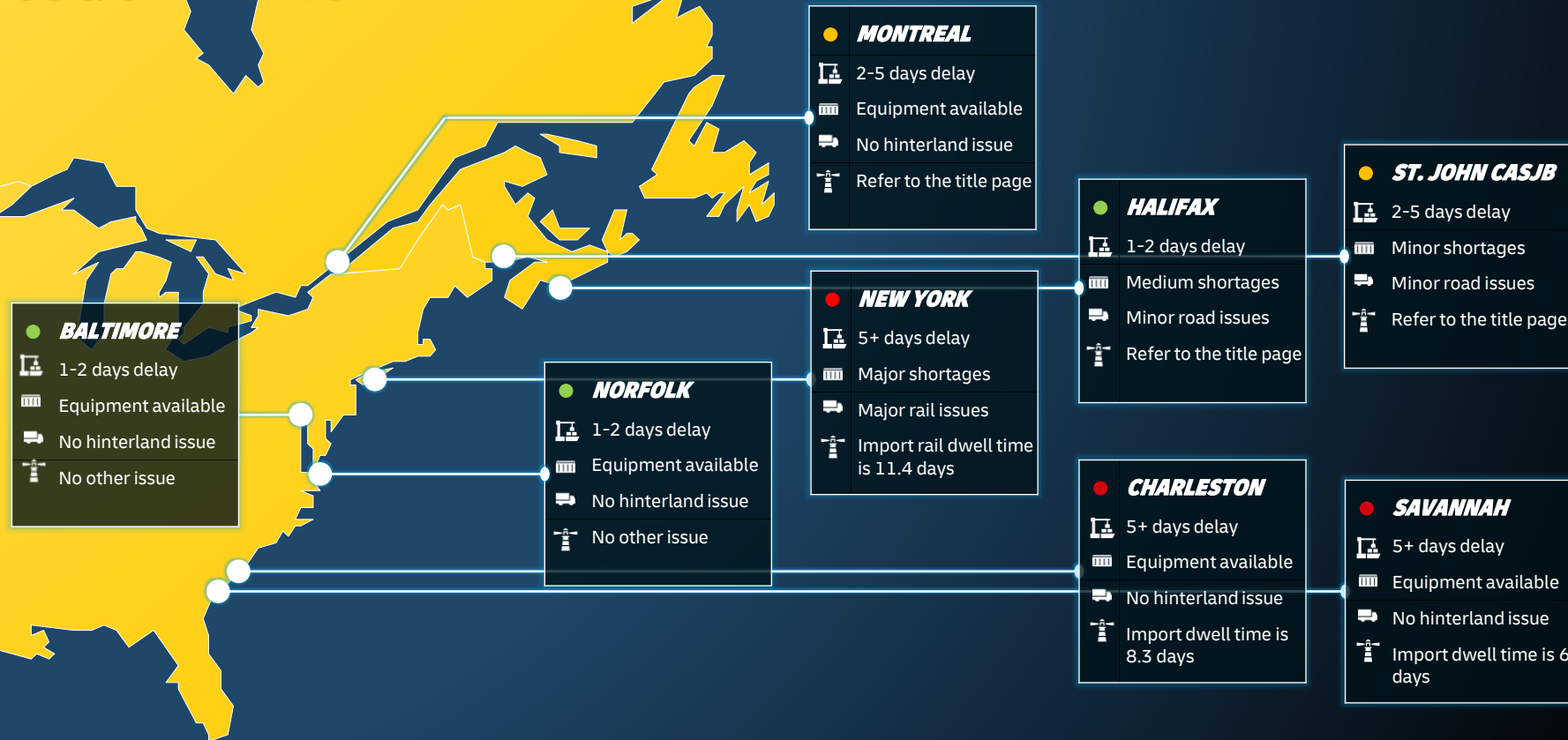
- 5+ days delay
- Equipment available
- No hinterland issue
- No other issue

OAKLAND

- No delay
- Equipment available
- No hinterland issue
- No other issue

LA/LONG BEACH

- 5+ days delay
- Equipment available
- No hinterland issue
- LAX rail dwell is 4.3 days LGB4-8 days



AMERICAS US GULF



HOUSTON

- 2-5 days delay
- Equipment available
- No hinterland issue
- Import dwell time 4 days

MOBILE

- No delay
- Equipment available
- No hinterland issue
- No other issue

JACKSONVILLE

- No delay
- Equipment available
- No hinterland issue
- No other issue

PT. EVERGLADES

- 1-2 days delay
- Equipment available
- No hinterland issue
- No other issue

MIAMI

- 2-5 days delay
- Equipment available
- No hinterland issue
- No other issue

NEW ORLEANS

- No delay
- Equipment available
- No hinterland issue
- No other issue

TAMPA

- No delay
- Equipment available
- No hinterland issue
- No other issue

MX

GT

HN

AMERICAS

MEXICO

**ENSENADA**

- 1-2 days delay
- Equipment available
- Minor road issues
- Forecast w/4 wks in advanced is needed

LÁZARO CÁRDENAS

- 5+ days delay
- Equipment available
- Medium road issues
- Forecast w/4 wks in advanced is needed

MANZANILLO

- 5+ days delay
- Minor shortages
- Medium road issues
- Ops impacted due to bad weather

ALTAMIRA

- 1-2 days delay
- Equipment available
- No hinterland issue
- Anticipated planning is needed

VERACRUZ

- 2-5 days delay
- Equipment available
- No hinterland issues
- Port ops impacted due to bad weather



PT. QUEZAL

- 5+ days delay
- Medium shortages
- Medium road issues
- No other issue

ACAJUTLA

- 5+ days delay
- Equipment available
- No hinterland issue
- No other issue

CALDERA

- 2-5 days delay
- Equipment available
- Medium road issues
- Delays in port due to bad weather

PUERTO CORTES

- No delay
- Equipment available
- No hinterland issue
- No other issue

PUERTO LIMON

- 1-2 days delay
- Equipment available
- Medium road issues
- No other issue

MANZANILLO

- 5+ days delay
- Equipment available
- No hinterland issue
- Roll overs, cut and runs, stop booking

RODMAN

- 2-5 days delay
- Equipment available
- No hinterland issue
- Roll over may occur

CRISTOBAL

- 2-5 days delay
- Equipment available
- No hinterland issue
- Roll overs, cut and runs, stop booking

AMERICAS
LATAM (PACIFIC)

● **PAITA**

🚢

1-2 days delay

🏠

Medium shortages

🚚

No hinterland issue

🚦

No other issue

● **CARTAGENA**

🚢

5+ days delay

🏠

Equipment available

🚚

Medium road issues

🚦

4-5 weeks in advance to get bookings

● **CALLAO**

🚢

1-2 days delay

🏠

Medium shortages

🚚

No hinterland issue

🚦

No other issue

● **BUENAVENTURA**

🚢

2-5 days delay

🏠

Equipment available

🚚

Major road issues

🚦

Issues with TCBUEN for new system

● **GUAYAQUIL**

🚢

5+ days delay

🏠

Minor shortages

🚚

No hinterland issue

🚦

TPG big delays

● **SAN VINCENTE**

🚢

2-5 days delay

🏠

Major shortages

🚚

Medium road issues

🚦

No other issue

● **CORONEL**

🚢

2-5 days delay

🏠

Major shortages

🚚

Medium road issues

🚦

No other issue

● **LIRQUEN**

🚢

2-5 days delay

🏠

Major shortages

🚚

Medium road issues

🚦

No other issue

● **SAN ANTONIO**

🚢

2-5 days delay

🏠

Major shortages

🚚

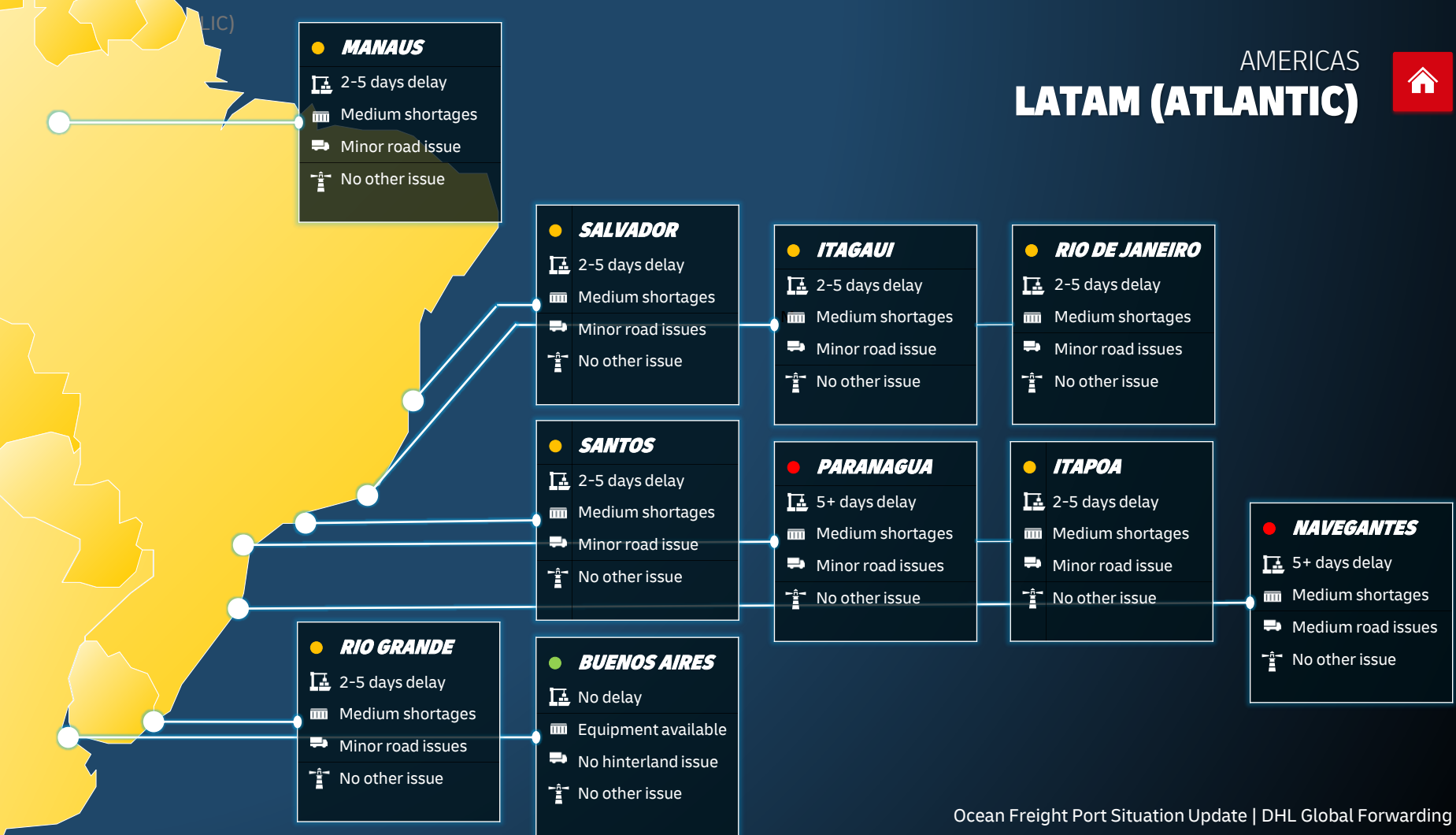
Medium road issues

🚦

No other issue



AMERICAS LATAM (ATLANTIC)



OCEAN FREIGHT PORT SITUATION UPDATE

EUROPE

Europe ports are currently experiencing significant challenges, with widespread congestion and delays affecting major gateways across the continent, particularly in Northern Europe.

Many terminals, including those in **Antwerp, Hamburg, and Rotterdam**, are operating at very high or critical yard utilization levels (e.g., 80-95%), leading to delays in cargo handling and vessel turnaround times.

Major ports like **Bremerhaven, Antwerp, and Hamburg** have seen significant increases in vessel waiting times for berths.

Delays at one port can ripple through the network, affecting onward schedules.

Labor shortages are a recurring issue, causing delays in terminal operations.

Strikes, such as the **national strike in Belgium** that briefly halted operations at Antwerp-Bruges mid May, intensify existing congestion and delays.

Historically low water levels on the Rhine River are limiting barge capacity, forcing more freight onto already stretched road and rail networks, leading to additional delays and congestion surcharges.

Extensive construction work planned for this summer will impact rail service schedules to and from **German ports**, causing disruptions.

The rail terminal in **Hamburg** is anticipated to be closed from July 4th to July 8th, 2025, due to significant construction work on a nearby motorway. During this time, rail transport to and from the Port of Hamburg will not be operationally possible.

It's recommended to plan shipping via alternative ports as truck capacity will be limited.

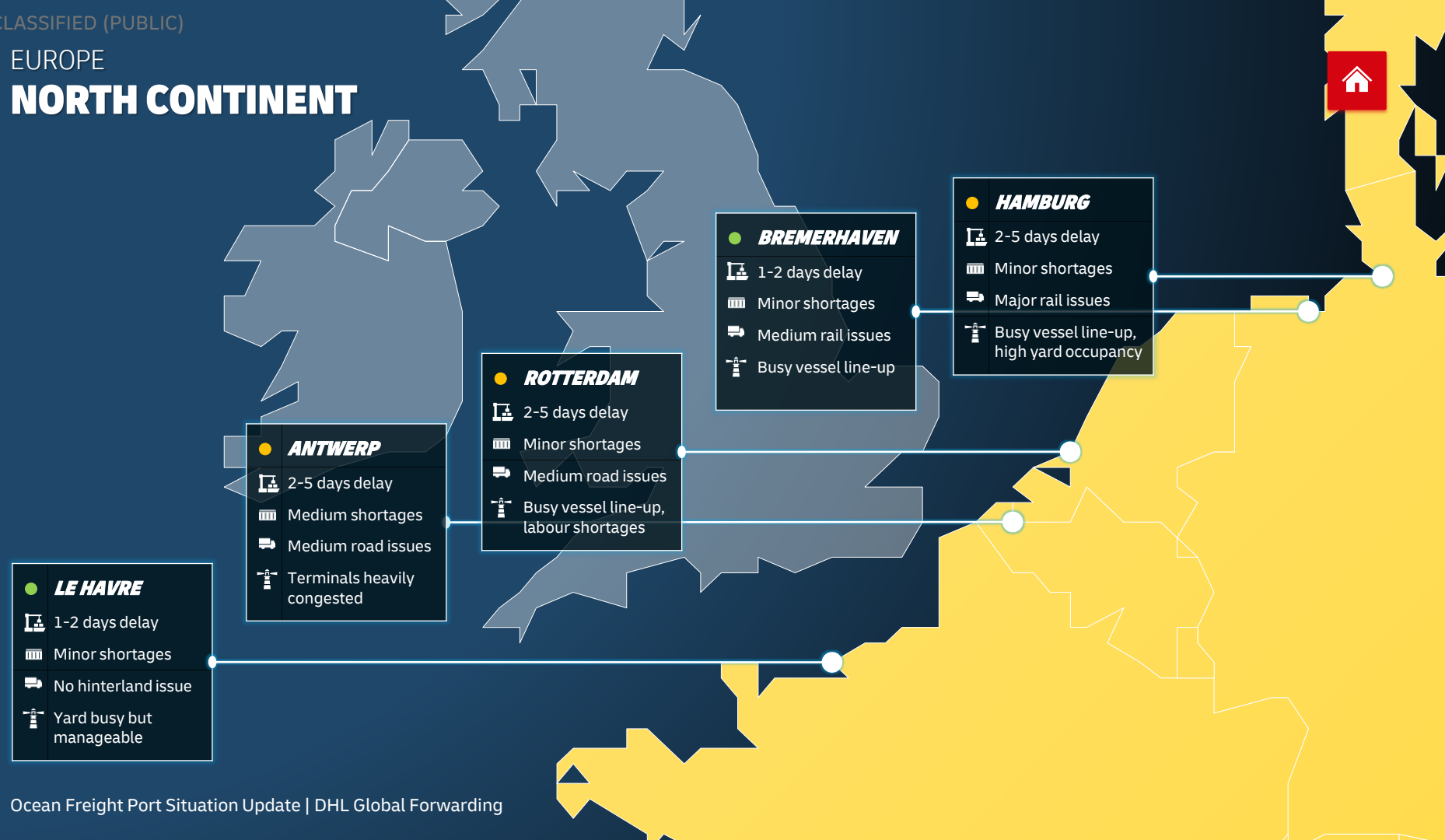
Rail operations across key intermodal routes in Italy are expected to face significant disruptions over the summer months due to scheduled maintenance and construction work.

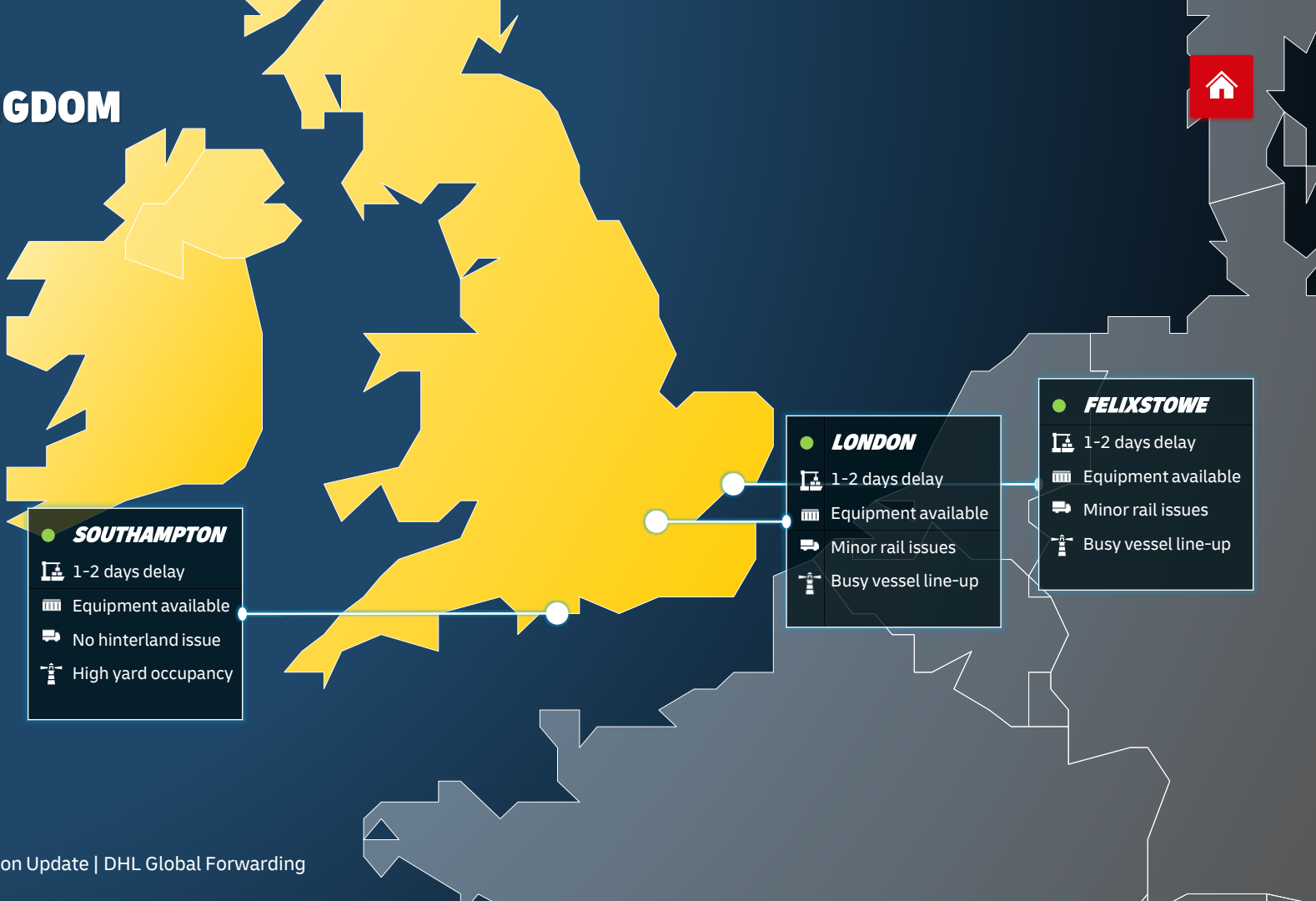
Congestions are expected to last at least until August, as ports and carriers contend with increased cargo volumes, labor shortages, and operational bottlenecks.

Shipping lines are implementing contingency measures, including adjusting schedules, extending transit times, rerouting services and port omissions, and introducing congestion surcharges.

EUROPE

NORTH CONTINENT





EUROPE

MEDITERRANEAN



SINES

- 1-2 days delay
- Equipment available
- No hinterland issue
- Busy vessel line-up

GENOA

- 2-5 days delay
- Equipment available
- Medium rail issues
- Busy line-up, high yard occupancy

FOS-SUR-MER

- 1-2 days delay
- Equipment available
- No hinterland issue
- Terminal busy but manageable

ALGECIRAS

- Up to 1 day delay
- Equipment available
- No hinterland issue
- No other issue

PIRAEUS

- 2-5 days delay
- No equipment issue
- Minor road issues
- Busy line-up, terminals congested

UNCLASSIFIED (PUBLIC)

OCEAN FREIGHT PORT SITUATION UPDATE

MIDDLE EAST & AFRICA

MIDDLE EAST & AFRICA

EAST MEDITERRANEAN



● **CASABLANCA**

- No delay
- Equipment available
- No hinterland issue
- No other issue

● **ALGIERS**

- Up to 1 day delay
- Equipment available
- No hinterland issue
- Transshipment delay at Malta

● **ISTANBUL**

- No delay
- Minor shortages
- No hinterland issue
- No other issue

● **HAIFA**

- 1-2 days delay
- Equipment available
- Medium road issues
- Dangerous goods restrictions in place

● **ASHDOD**

- 1-2 days delay
- Equipment available
- Medium road issues
- Dangerous goods restriction in place

● **ALEXANDRIA**

- No delay
- Minor shortages
- No hinterland issue
- No other issue

MIDDLE EAST & AFRICA

ATLANTIC

●	APAPA
🚢	Up to 1 day delay
🏢	Equipment available
🚚	No hinterland issue
🚦	No other issue

●	TEMA
🚢	2-5 days delay
🏢	Equipment available
🚚	Minor road issues
🚦	Minor delays at the border

●	ABIDJAN
🚢	No delay
🏢	Equipment available
🚚	No hinterland issue
🚦	No other issue

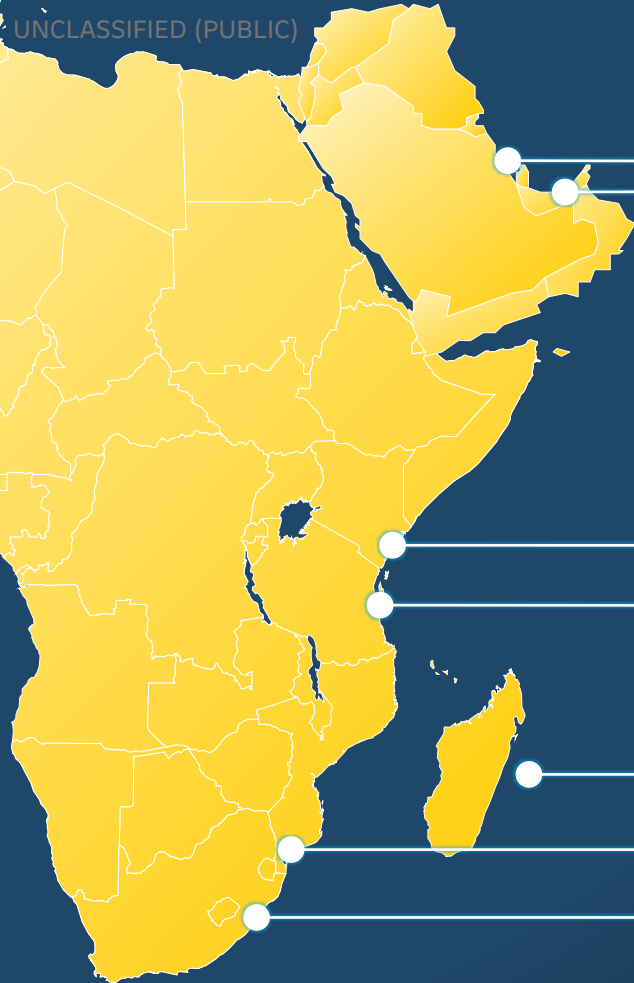
●	LUANDA
🚢	No delay
🏢	Equipment available
🚚	No hinterland issue
🚦	No other issue

●	WALVIS BAY
🚢	1-2 days delay
🏢	Equipment available
🚚	No hinterland issue
🚦	No other issue

●	CAPE TOWN
🚢	1-2 days delay
🏢	Minor shortages
🚚	No hinterland issue
🚦	40' Reefer shortages

●	PT. ELIZABETH
🚢	No delay
🏢	Equipment available
🚚	No hinterland issues
🚦	No other issue



**JEBEL ALI**

- No delay
- Equipment available
- No hinterland issue
- No other issue

DAMMAM

- Up to 1 day delay
- Equipment available
- No hinterland issue
- No other issue

MOMBASA

- 2-5 days delay
- Equipment available
- No hinterland issue
- No other issue

DAR ES SALAAM

- No delay
- Equipment available
- No hinterland issue
- No other issue

MAPUTO

- 1-2 days delay
- Equipment available
- No hinterland issue
- No other issue

DURBAN

- 1-2 days delay
- Minor shortages
- No hinterland issue
- No other issue

PORT LOUIS

- 1-2 days delay
- Equipment available
- No hinterland issue
- No other issue

MIDDLE EAST & AFRICA

GULF & INDIAN OCEAN



UNCLASSIFIED (PUBLIC)

OCEAN FREIGHT PORT SITUATION UPDATE

ASIA-PACIFIC



● **QINGDAO**

- No delay
- Equipment available
- No hinterland issue
- No other issue

● **SHANGHAI WGQ**

- No delay
- Equipment available
- No hinterland issue
- No other issue

● **SHANGHAI YS**

- No delay
- Equipment available
- No hinterland issue
- No other issue

● **NINGBO**

- No delay
- No equipment issue
- No hinterland issue
- No other issue

● **HONG KONG**

- No delay
- Equipment available
- No hinterland issue
- No other issue

● **SHEKOU**

- No delay
- Equipment available
- No hinterland issue
- No other issue

● **YANTIAN**

- No delay
- Equipment available
- No hinterland issue
- No other issue

ASIA-PACIFIC
NORTH-EAST ASIA



● **BUSAN**

- 🚢 1-2 days delay
- 🚚 Equipment available
- 🚚 No hinterland issue
- 🚚 No other issue

● **OSAKA**

- 🚢 No delay
- 🚚 Equipment available
- 🚚 No hinterland issue
- 🚚 No other issue

● **TOKYO**

- 🚢 No delay
- 🚚 Equipment available
- 🚚 No hinterland issue
- 🚚 No other issue

● **KEELUNG**

- 🚢 No delay
- 🚚 Equipment available
- 🚚 No hinterland issue
- 🚚 No other issue

● **KAOSHIUNG**

- 🚢 No delay
- 🚚 Equipment available
- 🚚 No hinterland issue
- 🚚 No other issue



SOUTH-EAST ASIA & SUBCONTINENT

MUNDRA

- No delay
- Minor shortages
- No hinterland issue
- No other issue

NHAVA SHEVA

- No delay
- Equipment available
- No hinterland issue
- No other issue

CHENNAI

- No delay
- Equipment available
- No hinterland issue
- No other issue

CHATTOGRAM

- No delay
- Equipment available
- No hinterland issue
- No other issue

PORT KLANG

- No delay
- Equipment available
- No hinterland issue
- No other issue

JAKARTA

- No delay
- Equipment available
- No hinterland issue
- No other issue

MANILA

- No delay
- Equipment available
- No hinterland issue
- No other issue

SINGAPORE

- No delay
- Equipment available
- No hinterland issue
- No other issue

ASIA PACIFIC OCEANIA

